



creo®



CREO 12 INSTALLATION INSTRUCTIONS FOR TECHNION USERS

September 2025

Step 1: Create New PTC eSupport Account

■ Start with the link:
<https://support.ptc.com/appserver/common/account/createAccount.jsp>

- Customer Number: **289909**
- Sales Order Number (SON): **3148915**

Personal
information

Customer Number:

Please supply one of the following pieces of information for verification. ⓘ

Service Contract Number (SCN):

or

Sales Order Number (SON):

or

Site Number:

When done, click **Create Account**

Create New PTC eSupport Account

New Customer Partner Basic Education

All fields marked with a * are required.

* First Name:

* Last Name:

* Title:

* E-mail:

* Confirm E-mail:

* Telephone:

* Address:

* City:

State/Province:

Zip/Postal Code:

* Country/Region:

* Preferred Language:

I would like to receive PTC product and services related e-mail: ☐ Yes ☒ No

* Password:

* Confirm Password:

You must complete this section to create a Customer Account to gain access to all Support entitled areas of PTC.com.

Customer Number:

Please supply one of the following pieces of information for verification. ⓘ

Service Contract Number (SCN):

or

Sales Order Number (SON):

or

Site Number:

PTC Security Challenge

Please enter the underlined numbers only, in order:

PTC collects, transfers and uses your data in accordance with PTC's [Privacy Policy](#).
 By continuing you agree that you have read and agree with our Privacy Policy.

Step 2: Software Download

- Open this page to download <https://support.ptc.com/appserver/auth/it/esd/product.jsp?prodFamily=ENG>
- Select
 - Release Creo 12.0 >
 - Creo 12.0 for Windows >
 - **Most Recent Version**
- Download the **Win64** file by clicking the **HTTPS** button
- Unzip the downloaded file

PTC Software Download

[\[Help \]](#)

Creo Parametric

[Choose Product Family](#)

Step 2 : Choose Release & Download

Use the list below to select the release you desire to download. If you need assistance refer to the [help notes](#).

If there is no update for a particular release, please use the last published artifact of the respective platform (this may apply in particular to wearable devices).

For other available versions, please open a [Support Case](#).

Check the [Creo Installation Central Resource Page](#) to find all necessary information to successfully install Creo based on your intent: Hardware requirements, Install/Update License server, License Management (Borrow, Flush, License Usage) and Creo Set Up.

Any issue during installation? Check the [Guided Licensing & Installation Troubleshooter for PTC Products based on FlexLM](#). This will help you navigate the most common solutions to errors and issues encountered during the installation or launch of PTC applications using Flexnet License Management.

Refer to [CS154266 - FLEXlm/FLEXnet Server Version and Flexnet enabled applications Compatibility Matrix](#) for general license manager compatibility detail and [FLEXnet hardware notes](#) (for detail and links to standalone FLEXnet installer downloads).

Release Creo 12.0

- ☒ PTC Creo Human Factors
- ☒ Creo Progressive Die Extension
- ☒ Creo 12.0 for Windows

Most Recent Version

Version: 12-4-1-0

HelpCenter (2176 MB)

Download now: [HTTPS](#)

[View SHA-256 checksum](#)

Install-from-web (78 MB)

Download now: [HTTPS](#)

[View SHA-256 checksum](#)

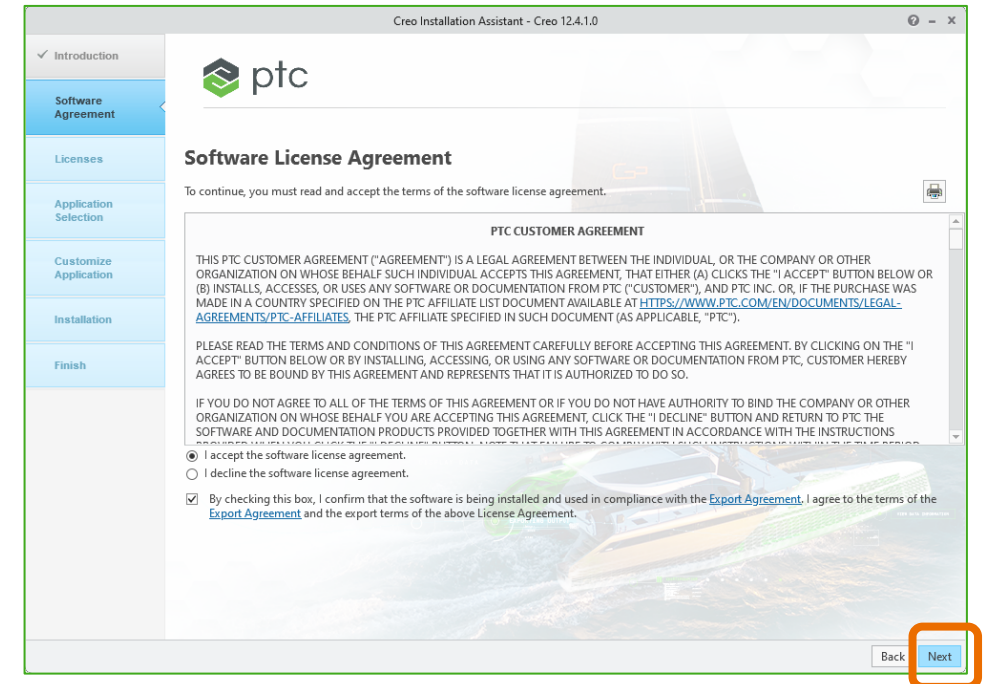
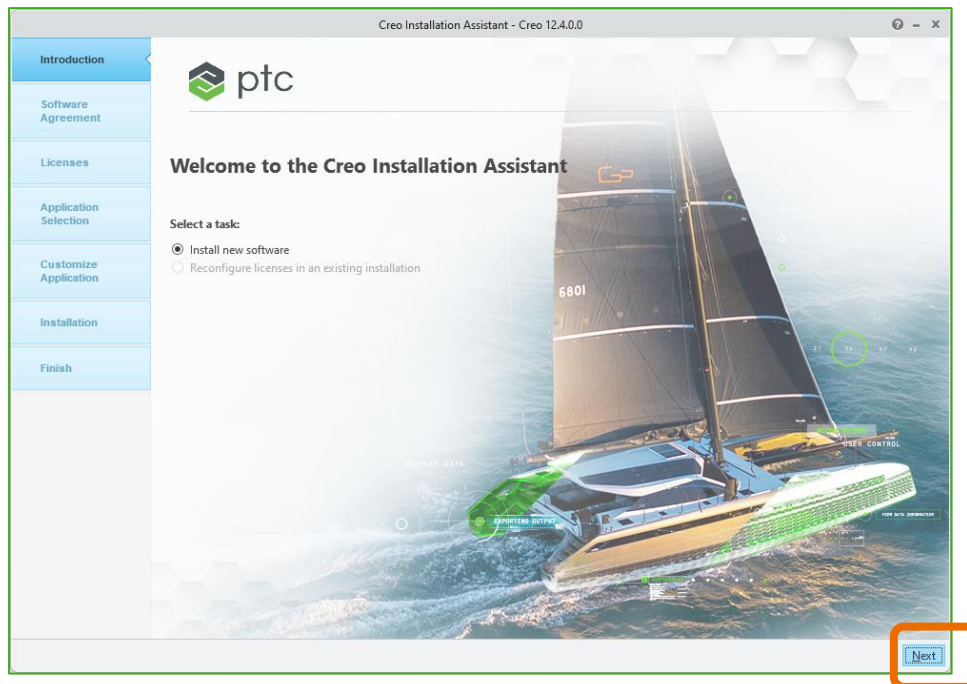
Win64 (6450 MB)

Download now: [HTTPS](#)

[View SHA-256 checksum](#)

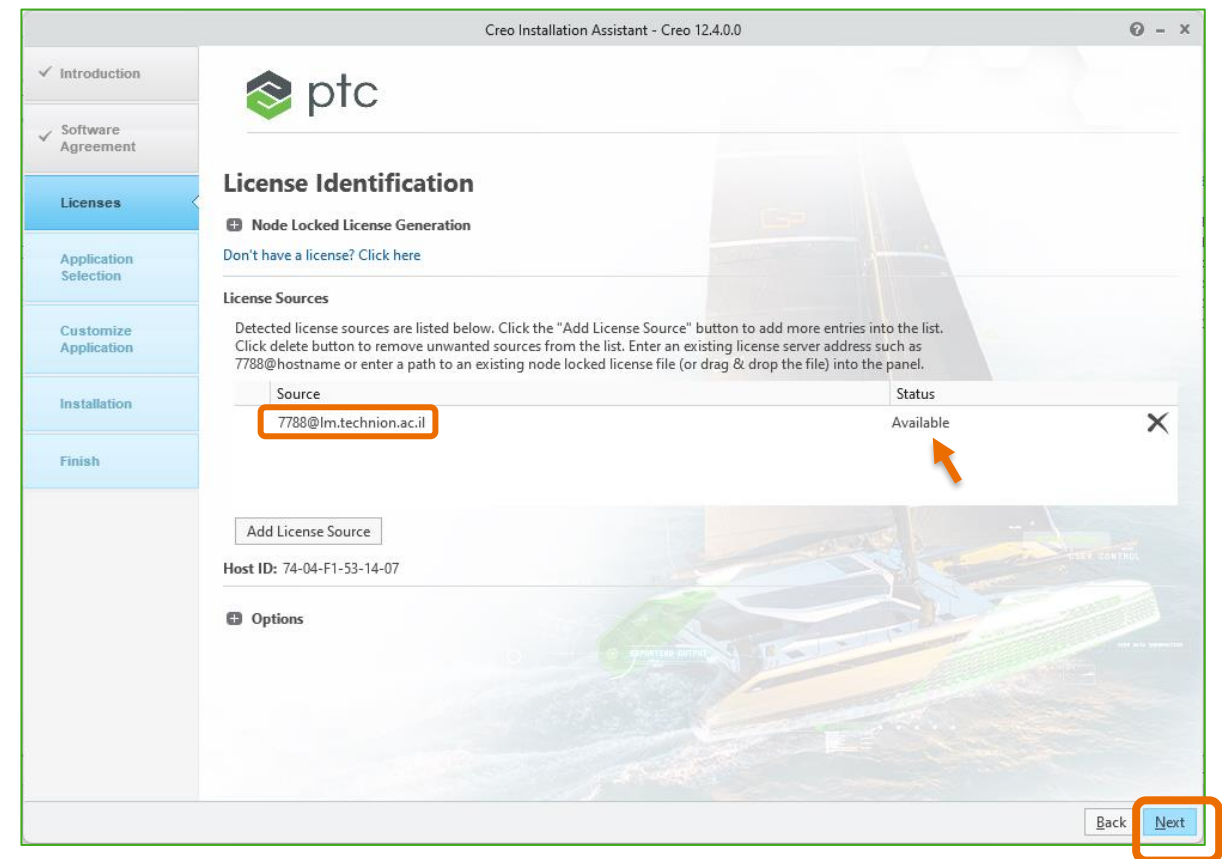
STEP 3: INSTALLATION

- Start Windows Explorer, browse to the installation media
- Double-click the **setup.exe** icon
 - In the Introduction screen, click **Next**
 - Accept the Software Agreement and click **Next**



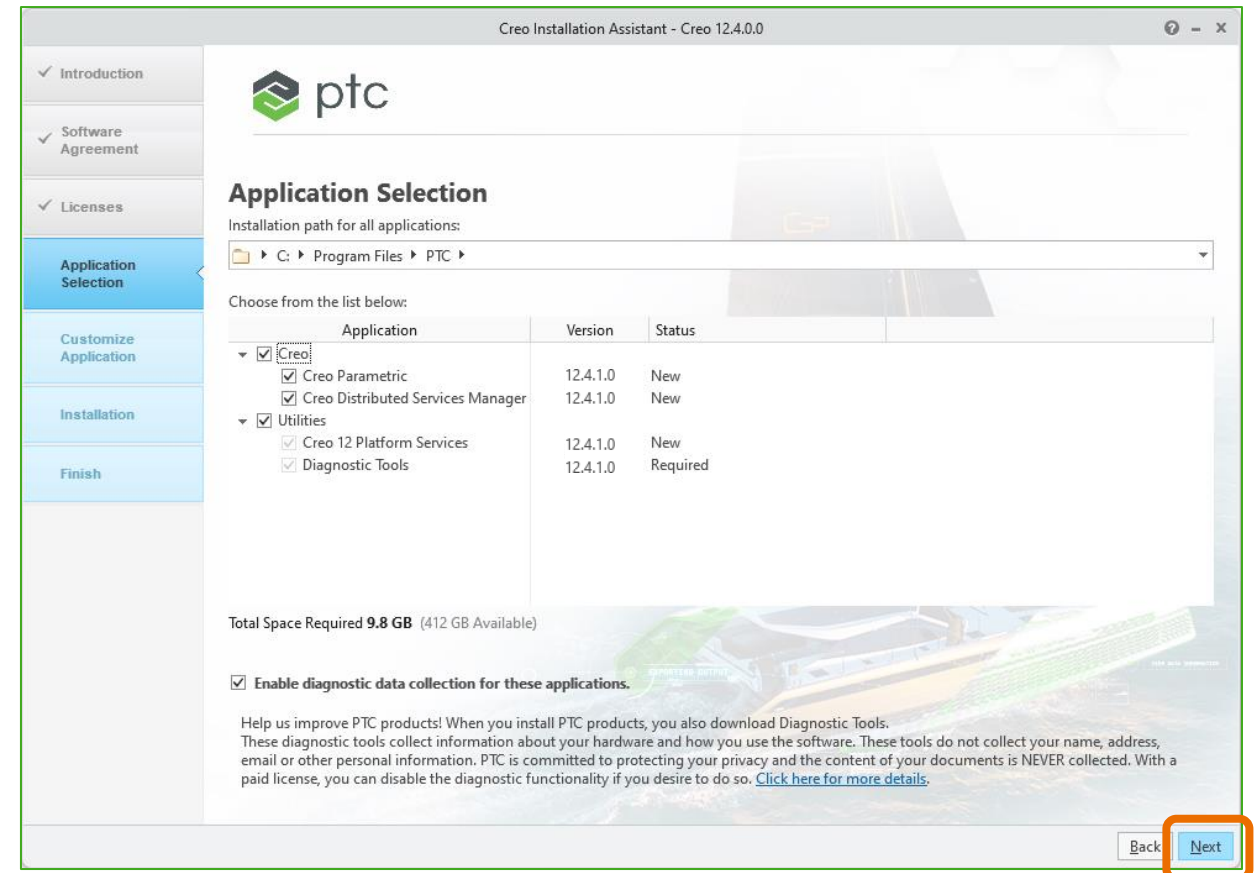
LICENSES

- **Important:** For this step, you must **be at** the Technion or **connected** to the Technion network via VPN
- Enter the license source in this format:
7788@lm.technion.ac.il
- It may take a few seconds to detect the license server status
- Once the license is detected (Available), click **Next**



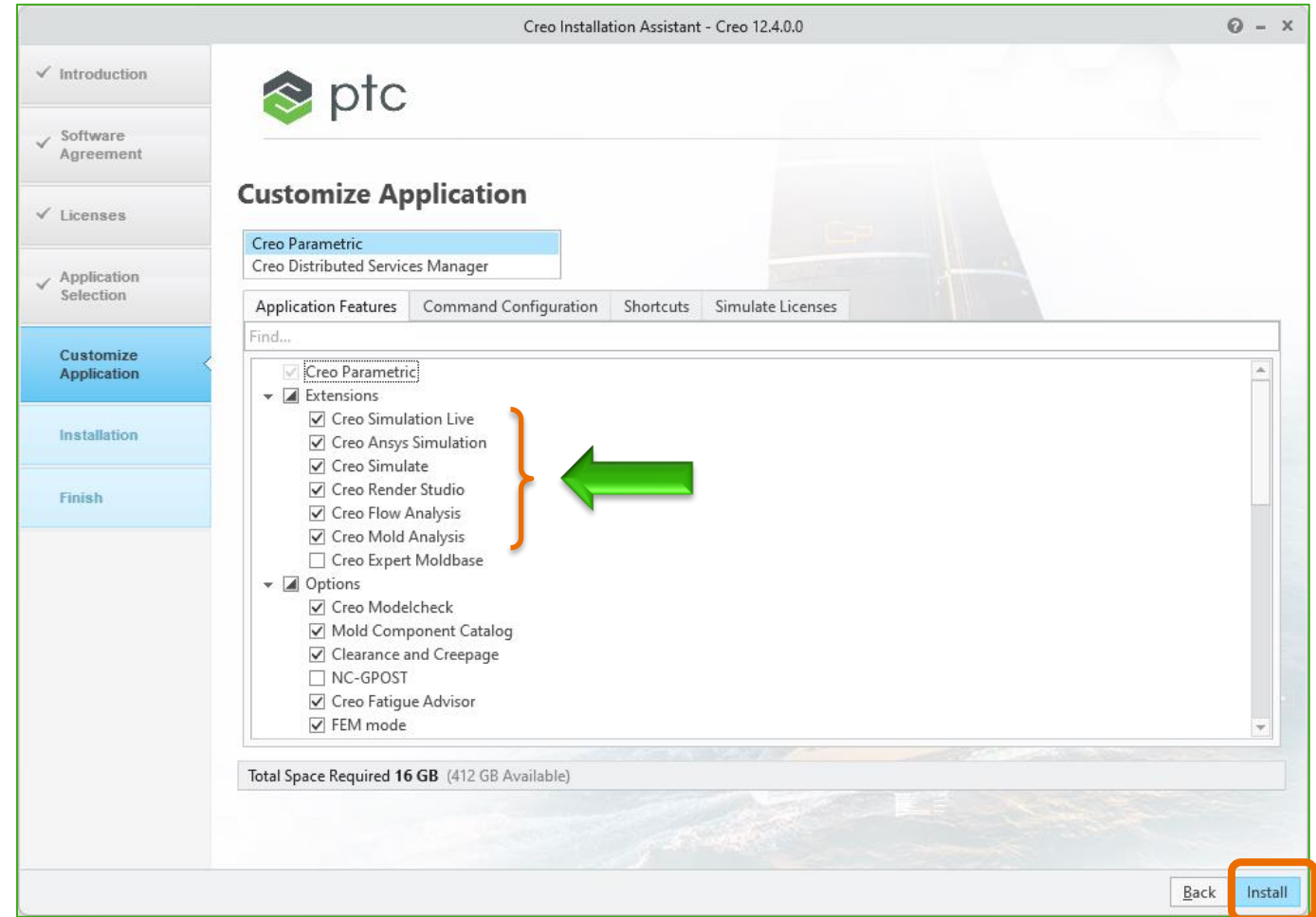
APPLICATION SELECTION

- Select the following applications and click **Next**



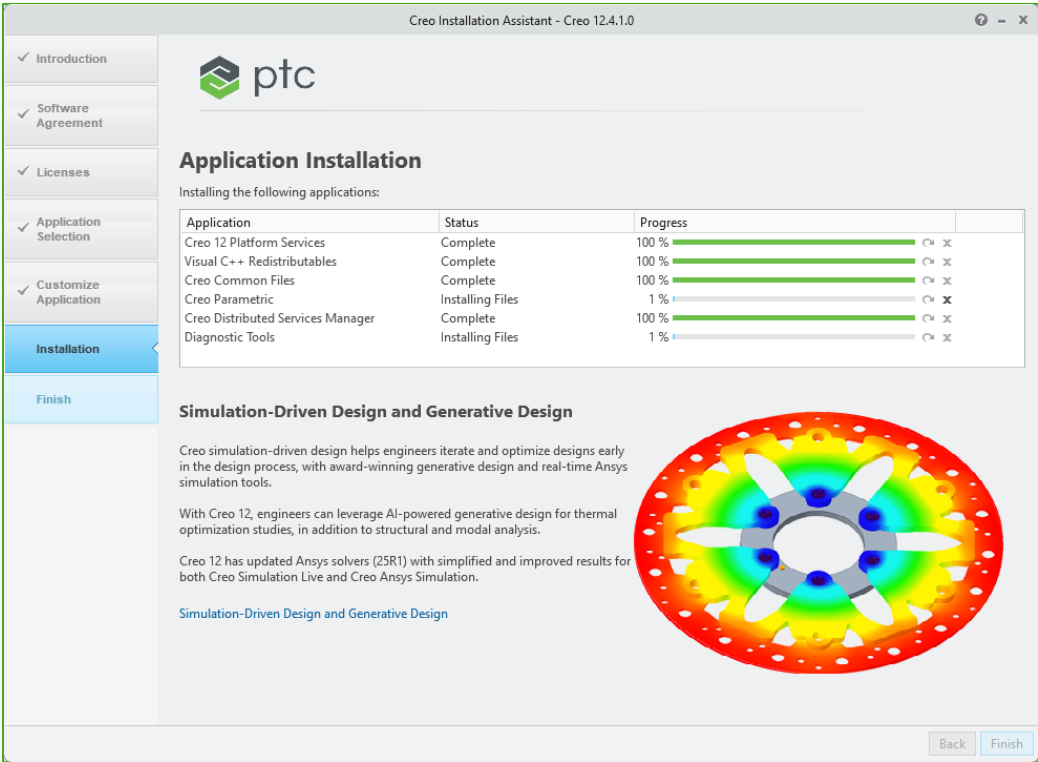
CUSTOMIZE APPLICATION

- Select the following extensions (as needed)
- click **Install**

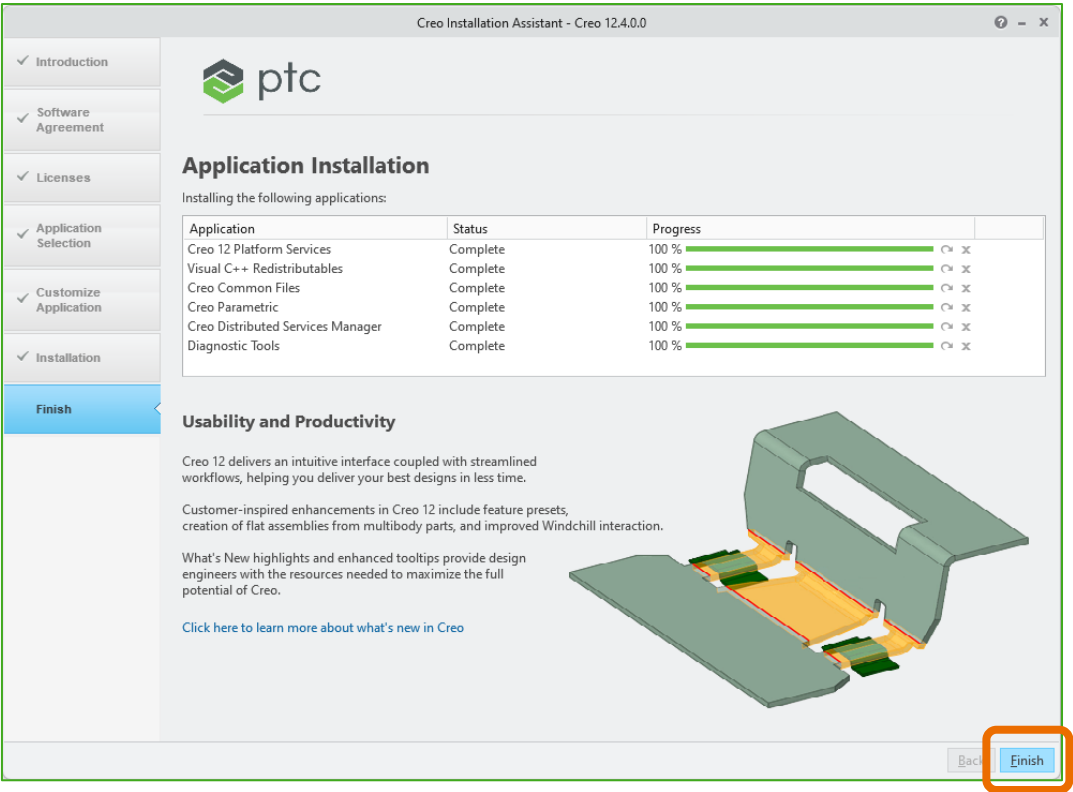


INSTALLATION

Installation process



Installation completed



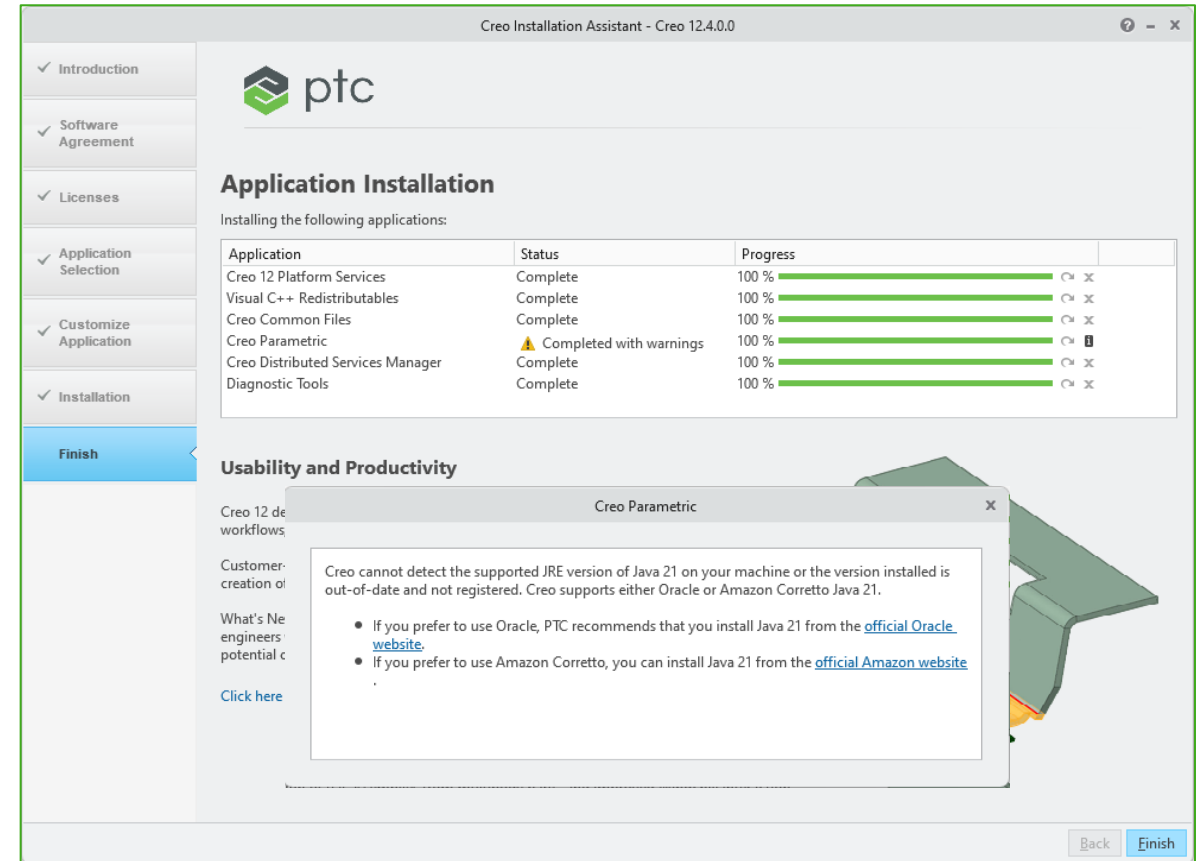
FAQ

- To run **Creo Ansys Simulation** you must have the latest 8.0.x versions of the following packages installed on your computer:

[Download link](#)

- ❑ Microsoft ASP.NET Core Runtime 8.0.x for Windows x64
- ❑ Microsoft .NET Desktop Runtime 8.0.x for Windows x64
- ❑ Microsoft .NET Runtime 8.0.x for Windows x64

- You can ignore the Java installation request





THANK YOU

ptc.com

