

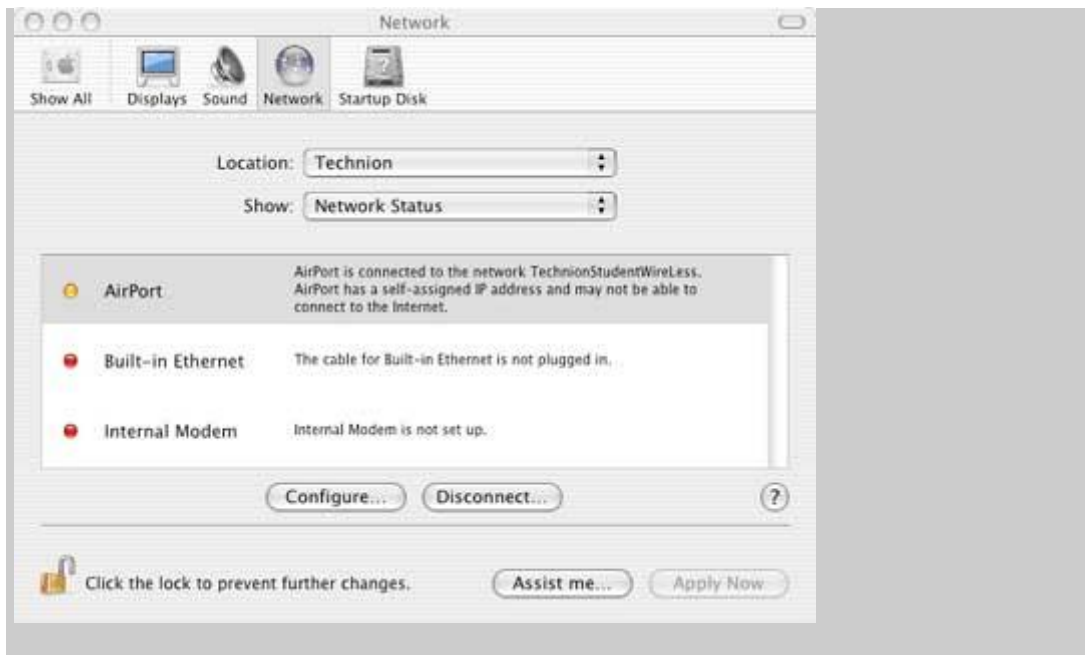


Wireless Communication Definitions In Macintosh

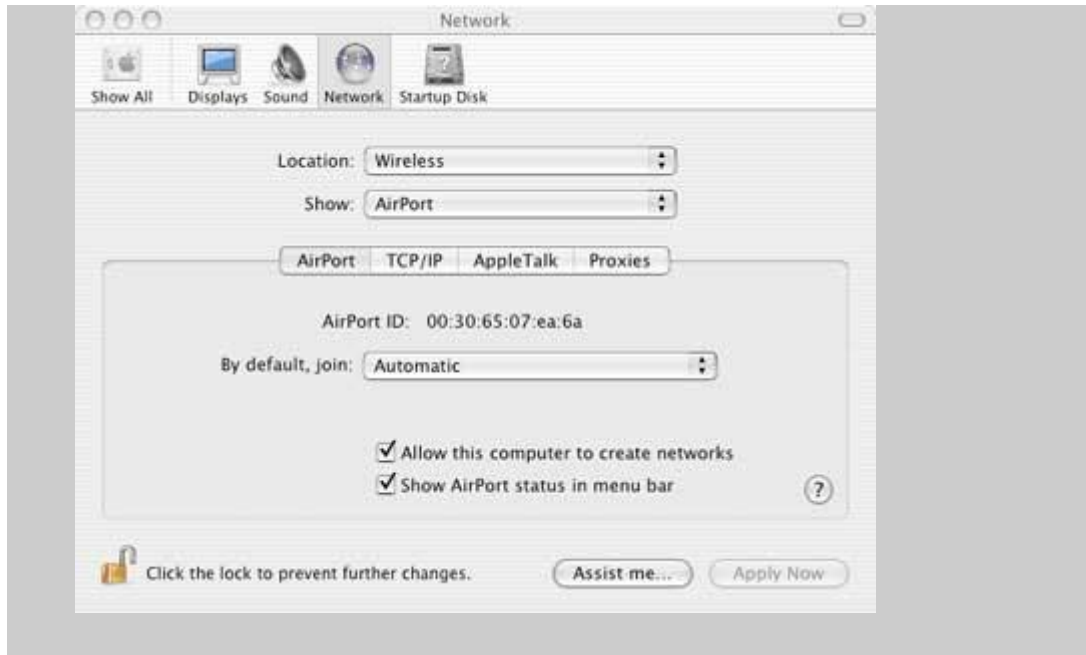
- Open System Preferences:



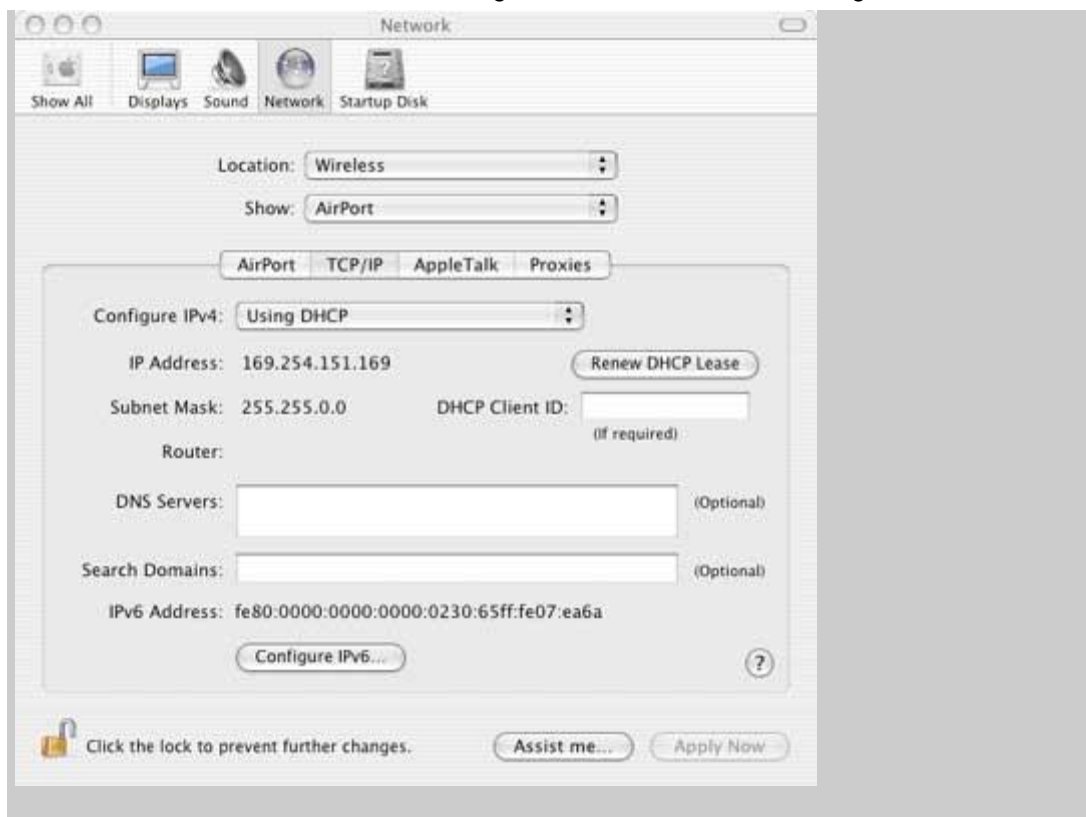
- Open Network, Choose Location, Add New Location, Save it as "Wireless".



- Mark AirPort, Click on Configure, Make sure the marked Fields are identical to the ones in this screen:



- Mark tab TCP/IP and make sure that "Using DHCP" was selected at "Configure IPv4":



- At the AirPort status choose "Techwifi" on the right commands menu.
- By selecting "Open Internet Connection" from the Airport status menu, you can see the communication status:

